



IMPORTANT NOTE:

Locate the Specification Label on unit to determine exact Model Name and electrical specifications. This information is needed to identify the correct replacement parts. See exploded view illustration(s) for Specification Label location.



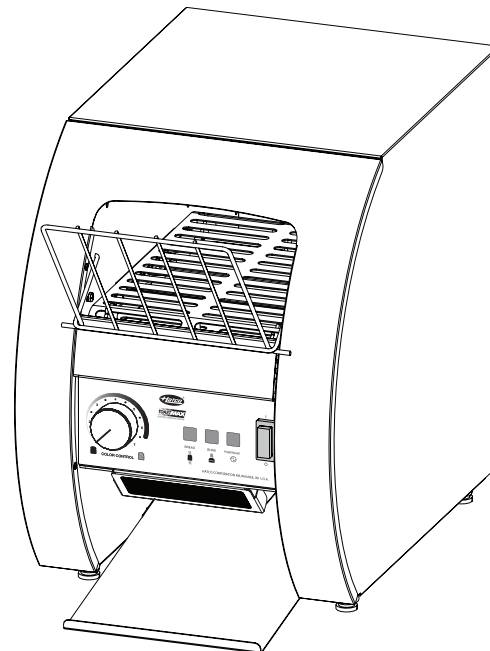
Use of replacement parts other than those supplied by Hatco Corporation may result in damage to unit or injury to personnel and will void all warranties.

TOASTMAX®

Electric Conveyor Toasters

TM3 Series

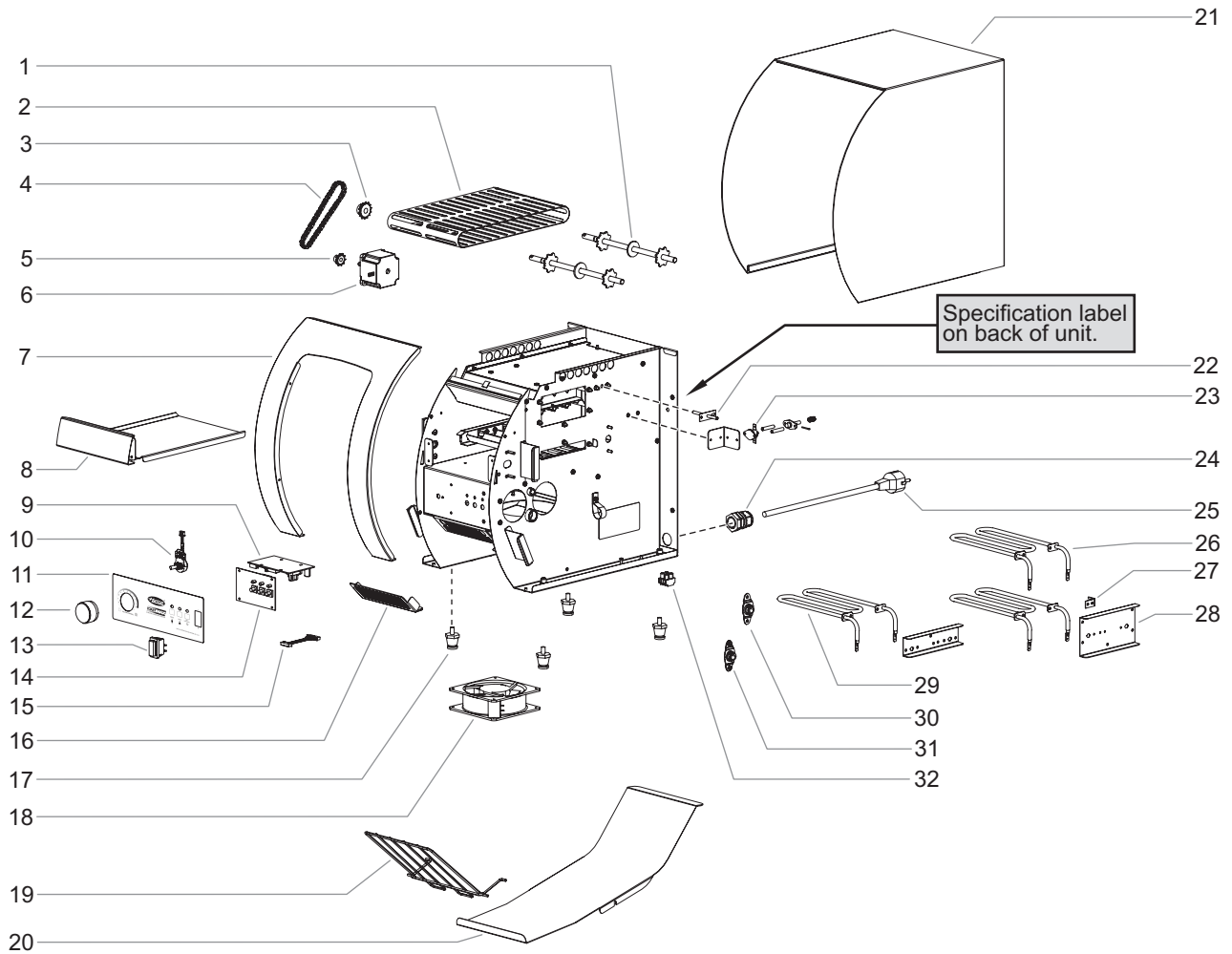
<u>Model Name</u>	<u>Page(s)</u>
TM3-5	2
TM3-5H.....	2
TM3-10	2
TM3-10H.....	2



Replacement Parts List

HATCO TOASTMAX® Conveyor Toasters

TM3 Series



Item	Description	Part No.	Qty.
1	Shaft Assembly		
	TM3-5 and TM3-5H Models	04.05.610.00	2
	TM3-10 and TM3-10H Models	04.05.386.00	2
2	Wire Belt		
	TM3-5 and TM3-5H Models	05.03.057.00	1
	TM3-10 and TM3-10H Models	05.03.036.00	1
3	Sprocket, Driven		
	TM3-5 and TM3-5H Models	05.09.062.00	1
	TM3-10 and TM3-10H Models	05.09.070.00	1
4	Roller Chain	05.03.078.00	1
5	Sprocket, Drive		
	TM3-5 and TM3-5H Models	05.09.061.00	1
	TM3-10 and TM3-10H Models	05.09.069.00	1
6	Stepper Motor, Conveyor	02.12.158.00	1

Item	Description	Part No.	Qty.
7	Front Plate, Curved		
	TM3-5 and TM3-5H Models		
	Stainless	04.05.1065.00	1
	Black	04.05.1065.001	1
	Blue	04.05.1065.002	1
	Red	04.05.1065.003	1
	White	04.05.1065.004	1
	TM3-10 and TM3-10H Models		
	Stainless	04.05.1046.00	1
	Black	04.05.1046.01	1
	Blue	04.05.1046.002	1
	Red	04.05.1046.003	1
	White	04.05.1046.004	1

Item	Description	Part No.	Qty.
8	Crumb Tray		
	TM3-5 and TM3-5H Models		
	Stainless	R04.05.1067.00	1
	Black	R04.05.1067.001	1
	Blue	R04.05.1067.002	1
	Red	R04.05.1067.003	1
	White	R04.05.1067.004	1
	TM3-10 and TM3-10H Models		
	Stainless	R04.05.1045.00	1
	Black	R04.05.1045.01	1
	Blue	R04.05.1045.002	1
	Red	R04.05.1045.003	1
	White	R04.05.1045.004	1
9	Main PCB Board	02.01.441.00	1
10	Potentiometer Harness	02.18.777.00	1
11	Control Label		
	TM3-5 and TM3-5H Models	07.01.414.00	1
	TM3-10 and TM3-10H Models		
	Standard	07.01.407.00	1
	CCC only	07.01.462.00	1
12	Control Knob	05.30.020.00	1
13	Switch, Rocker	02.19.248.00	1
14	Control UI Board	02.01.442.00	1
15	Data Line	02.18.783.00	1
16	Filter		
	TM3-5 and TM3-5H Models	02.12.172.00	1
	TM3-10 and TM3-10H Models	02.12.166.00	1
17	Adjustable Leg, 1" (25 mm)	R05.30.081.00	4
18	Fan		
	100 and 120 V	02.12.030.00	1
	200 and 220–240 V	02.12.039.00	1
19	Feed Ramp		
	TM3-5 and TM3-5H Models	04.05.1077.00	1
	TM3-10 and TM3-10H Models	04.05.1062.00	1
20	Toast Chute		
	TM3-5 and TM3-5H Models	04.05.1073.00	1
	TM3-10 and TM3-10H Models	04.05.1054.00	1
21	Top/Side Cover		
	TM3-5 and TM3-5H Models		
	Stainless	04.05.1078.00	1
	Black	04.05.1078.001	1
	Blue	04.05.1078.002	1
	Red	04.05.1078.003	1
	White	04.05.1078.004	1
	TM3-10 and TM3-10H Models		
	Stainless	04.05.1050.00	1
	Black	04.05.1050.01	1
	Blue	04.05.1050.002	1
	Red	04.05.1050.003	1
	White	04.05.1050.004	1

Item	Description	Part No.	Qty.
22	Probe	02.01.445.00	1
23	Thermal Disc Kit, High Limit	R02.16.199.00	1
24	Cord Grip		
	Standard	02.20.502.00	1
	CCC only	02.20.369.00	1
25	Power Cord		
	CEE 7/7 Schuko, 220–240 V	02.18.038.00	1
	BS-1363, 220–240 V	02.18.068.00	1
	AS 3112, 220–240 V	02.18.105.00	1
	NEMA 5-15P, 120 V	02.18.507A.00	1
	JIS C 8303 (PSE), 100 V	02.18.594.00	1
	WF5324 (PSE), 200 V	02.18.1340.00	1
	CCC 10A, 220 V	02.18.1053.00	1
	Cord Only, No Plug	02.18.571.00	1
26	Element, Top		
	TM3-5 and TM3-5H Models		
	100 V	02.05.860.00	1
	120 V	02.05.678.00	1
	220–240 V (TM3-5 Models)	02.05.760.00	1
	220–240 V (TM3-5H Models)	02.05.679.00	1
	TM3-10 and TM3-10H Models		
	120 V	02.05.675.00	1
	200 V	02.05.1167.00	1
	220–240 V (TM3-10 Models)	02.05.761.00	1
	220–240 V (TM3-10H Models)	02.05.765.00	1
27	Bracket, Element Support	04.05.579.00	2
28	Bracket, Top Element		
	TM3-5 and TM3-10 Models	04.05.1060.00	1
	TM3-5H and TM3-10H Models	04.05.750.00	1
29	Element, Bottom		
	TM3-5 and TM3-5H Models		
	100 V	02.05.861.00	1
	120 V	02.05.681.00	1
	220–240 V (TM3-5 Models)	02.05.760.00	1
	220–240 V (TM3-5H Models)	02.05.682.00	1
	TM3-10 and TM3-10H Models		
	120 V	02.05.676.00	1
	200 V	02.05.1168.00	1
	220–240 V (TM3-10 Models)	02.05.761.00	1
	220–240 V (TM3-10H Models)	02.05.766.00	1
30	Bearing w/ Bracket	04.56.854.00	2
31	Bearing Assembly	04.56.855.00	2
32	T-Block	02.15.050.00	1
	Wiring Diagram	10-01-1236	

NOTE: The last four digits in a ten digit numerical serial number are the manufacturing date code.

Example: Serial number 9625062231 has a date code of "2231" which indicates the following: 2231

└─ Week Thirty-One
└─ Year 2022



HATCO CORPORATION
P.O. Box 340500
Milwaukee, WI 53234-0500 U.S.A.
414-671-6350
partsandservice@hatcocorp.com
www.hatcocorp.com



HATCO CORPORATION
ASIA HEADQUARTERS
Unit 101, Premier Center, 20 Cheung Shun Street
Cheung Sha Wan, Kowloon, H.K.
Telephone (852) 2991-4121
hongkong@hatcocorp.com